

Reclaiming the Narrative on SEL

Strengthening the Parent Support

Dr. Sheldon Berman, AASA Lead Superintendent for SEL

Dr. Aaliyah A. Samuel, CASEL CEO & President



Social & Emotional Learning

TO ME...



Social & Emotional Learning

TO ME...



REFLECTION

What's your story? How can it help connect **parents in your community** to SEL?



SOCIAL AND EMOTIONAL LEARNING:

why now?



When it comes to SEL, we're united, not divided.

#1

DISTRICT PRIORITY
2022-2023

Tyton Partners, 2022

93%

OF PARENTS SAY
SEL IS IMPORTANT
IN SCHOOLS

Pew Research Center, 2022

83%

OF TEACHERS
SAY SEL IMPROVES
ACADEMICS

EdWeek Research, 2022

39

STATES INVESTING
RECOVERY
DOLLARS IN SEL

ARP State Plans, 2022



LEARNING LOSS RELATIONSHIP LOSS

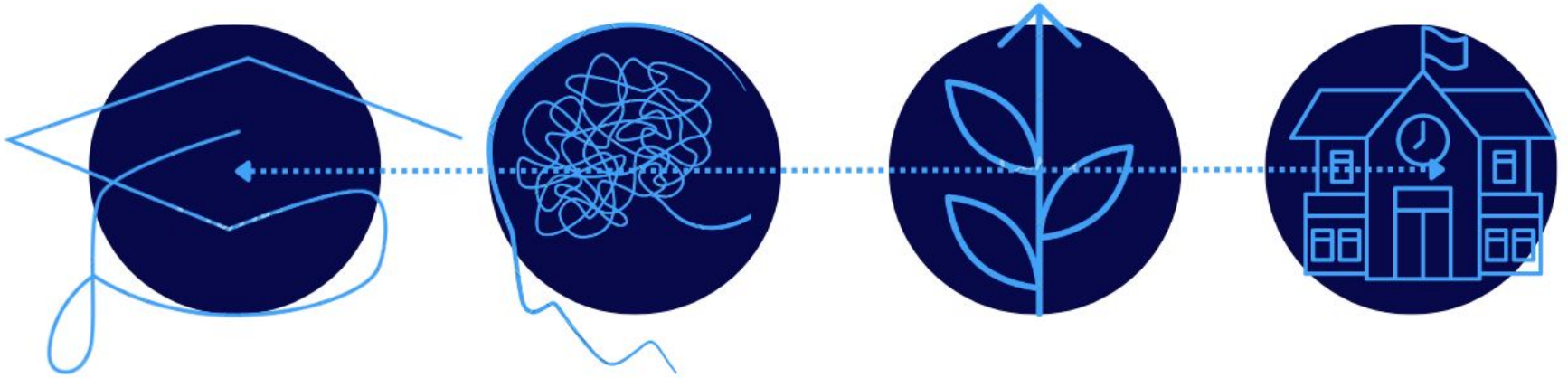


SOCIAL AND EMOTIONAL LEARNING:

what we know 

Hundreds of independent studies confirm:

SEL has a positive impact on students



ACADEMICS

**MENTAL
HEALTH**

**SKILLS
DEVELOPMENT**

**SCHOOL
CLIMATE**

Perceptions of SEL Research

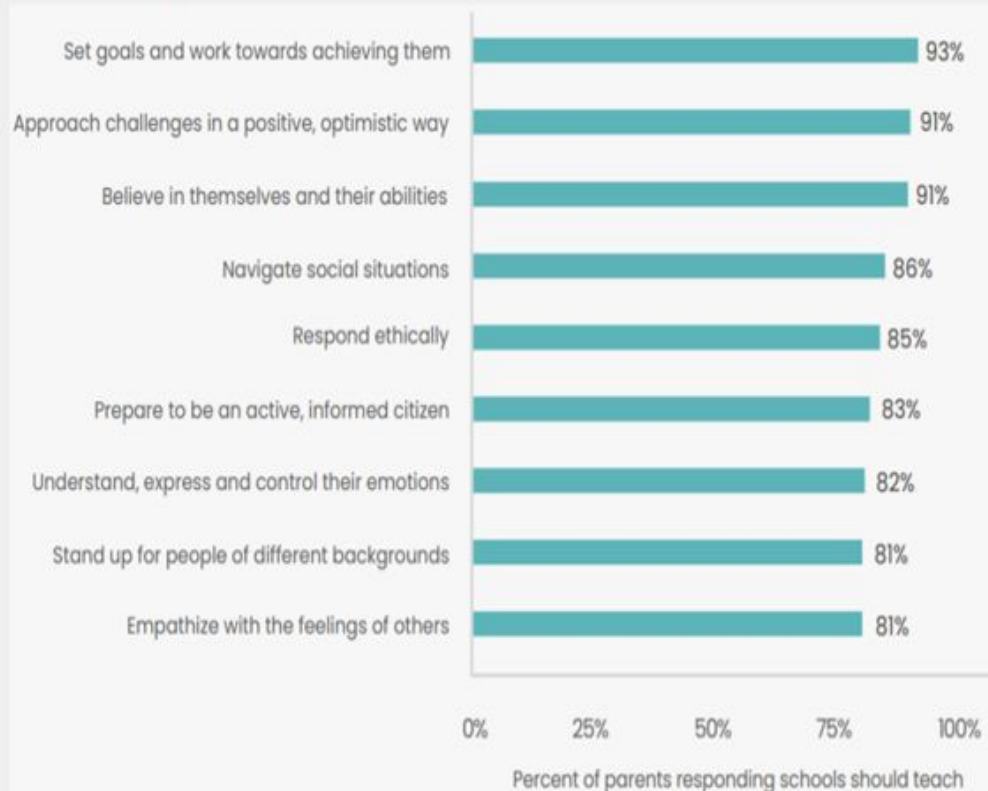
- ❖ PEW Research, 2022
- ❖ Rand, 2022
- ❖ Lake Research, 2022
- ❖ Benenson Strategy Group, 2021
- ❖ Echelon Research, 2021
- ❖ Fordham Institute, 2020
- ❖ Learning Heroes, 2018

Key Findings

- 1** Parent's largely take the term "SEL" at face value – and there aren't significant negative top-of-mind associations with it.
- 2** There is strong and widespread support for teaching SEL – both among the 54% of parents who believe it's already taught at their kids' school and those who say it isn't or are unsure.
- 3** Parents prioritize a range of skills that SEL supports...
- 4** ...and see how teaching SEL creates a positive classroom environment where kids learn the skills they need to succeed – in school and in the future.
- 5** In head-to-head argumentations, parents overwhelmingly say schools have a role to play in teaching kids social and emotional skills and reject the idea that SEL is somehow taking the place of mental wellness supports like therapists or social workers.



Figure 1. Large majorities of parents support schools teaching all nine SEL-related skills that the survey asked about.



**PARENT
SUPPORT
FOR SEL**

Parents prioritize SEL learning priorities as much as academics.

How important is it that your child's school priorities this?



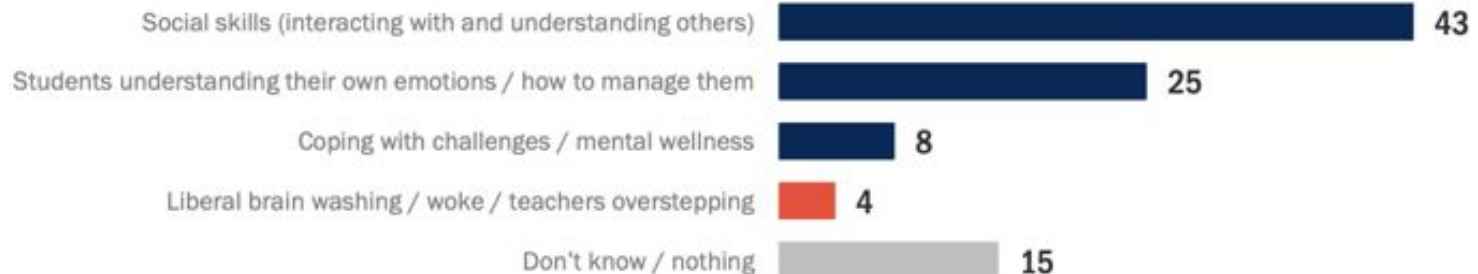
PARENT SUPPORT FOR SEL

Parents largely take the term “SEL” at face value – and there aren’t significant negative top-of-mind associations with it

Despite some criticism of SEL by a few politicians, almost no parents associate the term “social-emotional learning” with anything negative. On the contrary, parents understand that SEL is about learning social skills, tools to understand and manage their emotions, and how to cope with challenges.

When you hear the term 'social-emotional learning' what comes to mind for you? What does this term mean, in your opinion?

Showing coded open-end responses



LEARNING HEROES STUDY: PARENT SUPPORT FOR SEL

"Teaching real-world skills and traits helps students be better prepared for college, the workforce, and life."

83%

81%

"Children need these skills and traits to work with others, solve social problems, and **make communities better** in the future."

"When children have **learning mindsets** and skills, they are motivated and know **how to learn**, and are more likely to **thrive in school**."

80%

"Children equipped with social, emotional, and [academic/cognitive] skills and traits are **ready to learn and do better in school**."

80%

"If **parents and families join forces with school and after school** to develop these skills and traits, all aspects of education will improve."

79%

"**We live in a very different world today**, with more social media, bullying, violence, and suicide—making it even more important for teachers and schools to reinforce skills and traits that help students and their parents deal with these issues effectively."

79%

VIRGINIA BEACH MESSAGING

- SEL helps young people develop the skills they need to succeed in school and life.
- SEL is focused on creating a safe and inclusive learning environment for all students.
- Social-emotional learning is about the well-being of young people.



Reclaiming the Narrative

Pushing back to protect good teaching, important content and
students' sense of belonging BY SHELDON H. BERMAN

FEBRUARY 2023 SCHOOL ADMINISTRATOR

“

OPPOSITION TO SEL [... IS] ABSOLUTELY HELD BY A VOCAL MINORITY, MANY OF WHOM MAY NOT EVEN HAVE CHILDREN IN K-12 SCHOOLS, AND THAT **THESE VIEWS DO NOT REPRESENT WHAT THE MAJORITY OF PARENTS REALLY WANT...**”

Despite lawmakers trying to control content in classrooms, majority of Ohio parents trust their kids' teachers, new survey shows

Published: Aug. 15, 2022, 2:33 p.m.



A photograph of a family of three—a woman, a man, and a young child—smiling and interacting joyfully. The woman is holding the child, and the man is leaning in from the side. The entire image is overlaid with a semi-transparent blue filter. The text is centered over the image.

Parents + Caregivers Take Center Stage with SEL

Building community trust and shared learning



School serves as the **key partner to the family** in the healthy development of the child. Like many parents, my wife and I hope for our son to grow up a confident, caring, and joyful person who is led by a deeper sense of purpose and contribution.

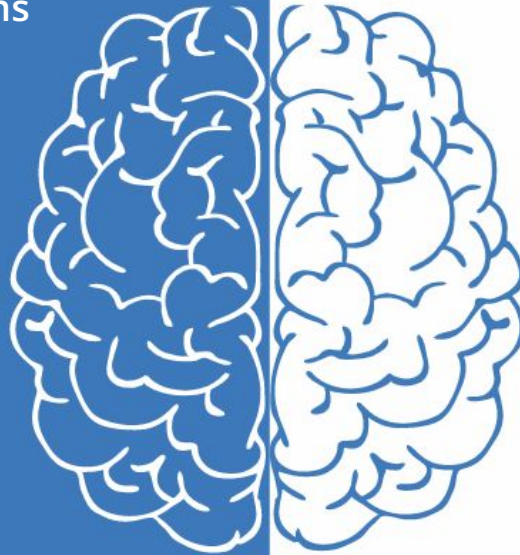
FATHER OF A HIGH SCHOOL STUDENT



SEL
MESSAGING



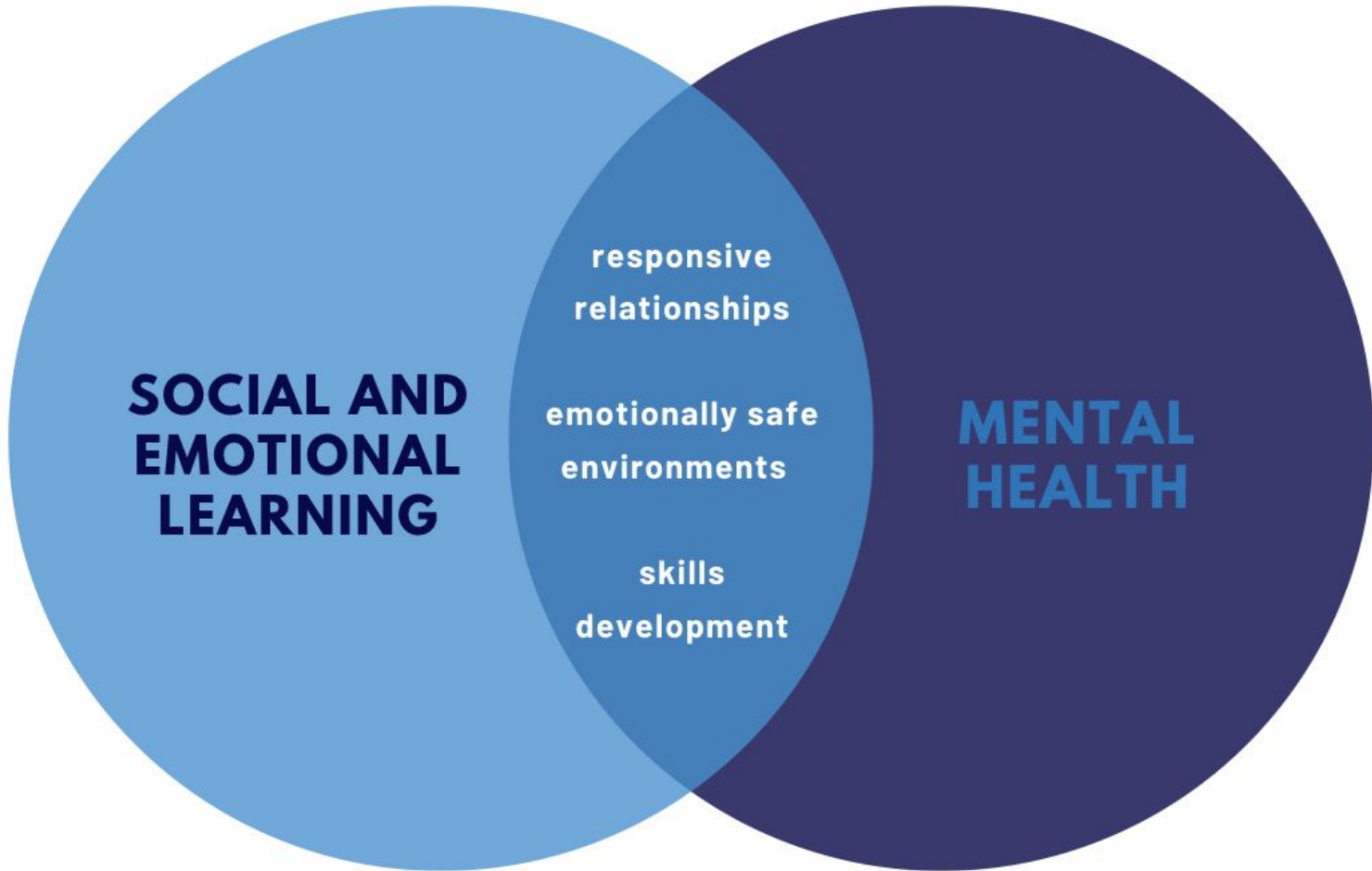
- Identify and manage emotions
- Recognize sources of stress
- Develop self-awareness and sense of identity
- Think critically
- Build relationships and communicate effectively
- Maintain positive motivation



- Representing
- Reasoning and proving
- Reflecting
- Selecting tools and strategies
- Connecting
- Communicating
- Problem solving

THINK BACK TO A MATH CLASS...





**SOCIAL AND
EMOTIONAL
LEARNING**

responsive
relationships

emotionally safe
environments

skills
development

**MENTAL
HEALTH**



WHAT'S STAKE



A person in a white hoodie is seen from behind, holding a cardboard sign high above their head with both hands. The sign has the words "WE NEED A CHANGE" written in black, hand-drawn capital letters. They are in a crowd of people, with several others visible from behind in the foreground and middle ground. The background shows multi-story buildings under a clear blue sky. The overall image has a blue-tinted overlay.

WE NEED
A CHANGE

From Commitment
to **ACTION**



80% of parents want social and emotional learning.

So do the vast majority of students, educators, and employers. We can't let politics drown out our voices and get in the way of our children's education and future.

[Take Action](#)

Proactively protect SEL in your community



If you believe every child deserves...

- A quality education that recognizes their unique needs
- Opportunities to develop skills needed for academic success and fulfilling careers
- Teachers who care about them
- To feel safe and welcome in their schools

FREE SEL RESOURCES



District Resource Center

Guidance and resources for implementing SEL districtwide

drc.casel.org



Guide to Schoolwide SEL

Guidance for implementing SEL throughout a school

schoolguide.casel.org



State Resource Center

Curated library of resources and tools for state policymakers

casel.org/state-resource-center/



SEL Workshop Series

For implementing SEL schoolwide, offered virtual (live and on-demand)

schoolguide.casel.org



Guide to SEL Programs

Process for selecting a program, including an evidence-based list

pg.casel.org



Intro to SEL Module

Free, 60-minute introductory online module about SEL

LINK PENDIN



Leading with SEL

Messaging resources to communicate about SEL and its benefits in your community

leadingwithsel.org



Learn more: casel.org



DISTRICTWIDE SEL ESSENTIALS FOR SUPERINTENDENTS

A Toolkit to Support District Leadership in Systemic
Implementation of Social and Emotional Learning



in collaboration with

AASA
THE SCHOOL SUPERINTENDENTS ASSOCIATION

Ten High Leverage Superintendent Actions



Building the Foundation

Develop Foundational Support for SEL among Key Stakeholders, Including the School Board



Vision

Engage a Diverse Group of Stakeholders to Create a Shared Vision for the District That Establishes SEL as Core to Student Success



Communication

Communicate Consistently About SEL as a District Priority



Resource Allocation and Alignment

Build SEL Priorities into Staffing, Funding, and Budgeting for Sustained SEL Implementation



District Organization

Organize the District to Promote Collaboration among School and District Leaders around SEL, Academics, and Equity



Strengthen Your SEL Knowledge

Become Versed in the Science of SEL, the Implementation of SEL, and What SEL Looks Like in Schools and Classrooms



Lead Adult SEL Culture

Model SEL Through Interactions with All District Students, Staff, Families, and Communities



Policy Alignment

Adopt District Policies That Support SEL



Family & Community Partnership

Develop Relationships with Families and Community Partners to Align Missions and Promote SEL



Equitable Outcomes

Ensure the District's SEL Implementation Supports the Goals of Achieving Equitable Outcomes for All Students





**A caring school
community gives
our students a
vision of the way
the world could be.**

www.sheldonberman.com

SHELLEY BERMAN

Shelley.Berman@aasa.org

DR. AALIYAH A. SAMUEL

ASamuel@casel.org
@caselorg

